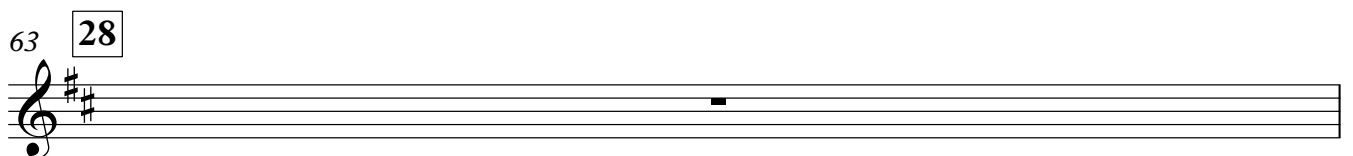
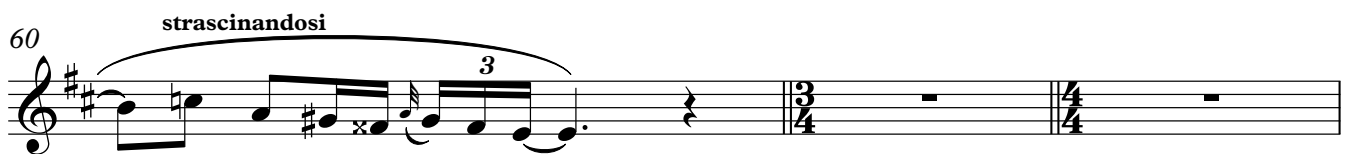
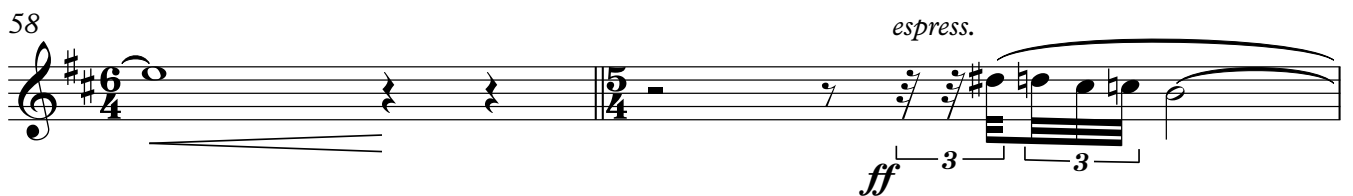
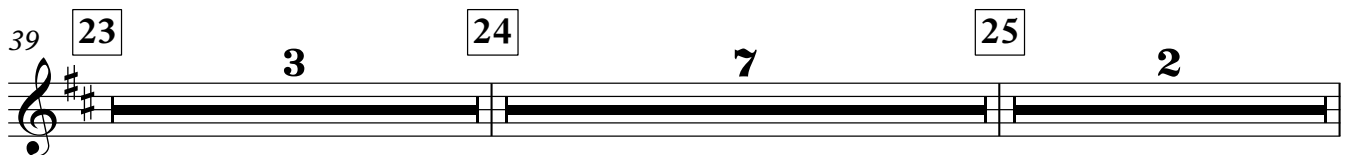
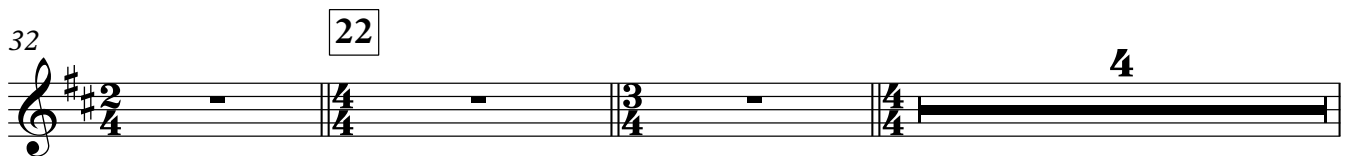
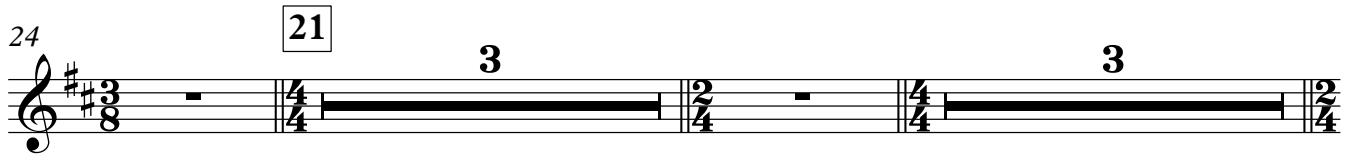
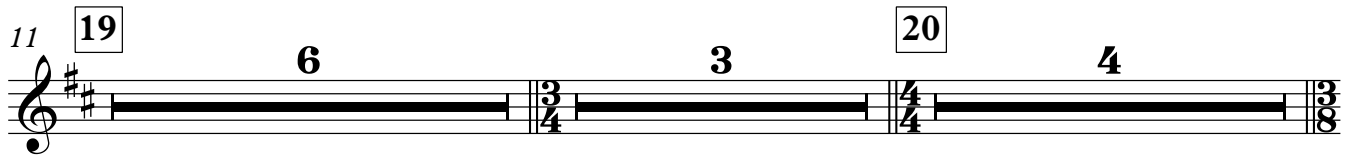
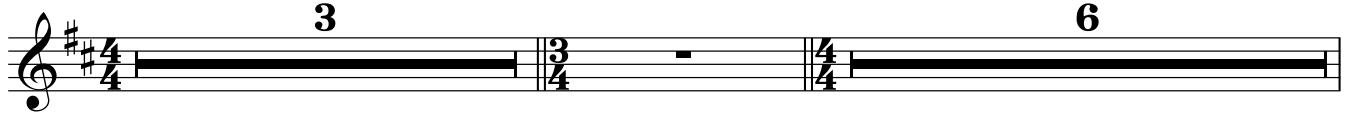


II

Trumpet in B \flat I

Andante sostenuto e misterioso $\text{♩} = 46$



Trumpet in B \flat I

64

f

3 3

67

strascinandosi ----- ben sost. ----- a tempo strascinandosi

ff *ff*

3 3

70

29

8

80

30

5

31

8

5 8

Trumpet in B \flat I

III

Allegro con brio, ma non troppo mosso $\text{♩} = 110$

13 32 33 15

46 34 *p*

52 4 *p*

61 35 $\text{♩} = 120$ 10 *f* *p*

77 36 13

93 37 13 38 5 *p*

114

118 39 15 poco meno 5

138 40 *Meno mosso* $\text{♩} = 70$ *A tempo* $\text{♩} = 110$ *Meno mosso* $\text{♩} = 70$

146 3 *A tempo* $\text{♩} = 110$ *Meno mosso* $\text{♩} = 70$ 3

Trumpet in B♭ I

2

155 **A tempo** ♩=110 **Meno mosso** ♩=70 **A tempo** ♩=110

3

162 **41** **Meno mosso** ♩=70

10

ff

176 **42** **A tempo** ♩=110

4

183

3

mf

191

195 **43** **Meno mosso, rubato** ♩=80

f *ff*

2

204 **Tempo primo** ♩=110 **Meno mosso** ♩=80

210

3

213 **44** **Tempo primo** ♩=110 **45**

24 11 2

f

252

2 2 3

mp

Trumpet in B♭ I

3

264 **46** **7**

mp *f*

275 **47** **Meno mosso** ♩=85 **2** ♩=80 **6** **48** **Ben moderato** ♩=70 **3**

e - si - tan - do

287 **2** **49** **9** **50** *esitando, poco accel. al Tempo I* *animato* ♩=110 *poco a poco acceler.*

303 *mp* *cresc.* **2**

309 **51** **con fuoco** ♩=120 **4** *mp*

320 ♩=125 *p*

328 **3** **3**

332 **52** **Meno mosso** ♩=70 **3** *poco acceler.* *p* **3** **3** **3** *poco allarg.*

338 **a tempo** ♩=70 **6** **piu animato** ♩=80 **53** ♩=100 **3**

349 **3** ♩=110

Trumpet in B♭ I

4

352

mp *mf*

363 54

mp

371

sf

376

sf *f*

In 4 $\text{♩} = 45$ **In 2** $\text{♩} = 50$

sf

387 56

ff

395 57

sfz *ffp* *fff* *sf* *sf* *sf* *sf* *sf* *sf*

403 **molto. allarg.**

fff *fff*